



**Liquid sewage wastewater mud slurry  
intelligent digital electromagnetic flowmeter**

**Max-Flow**

# Max-Flow

## INTELLIGENT MAG FLOW METER

INNOVATION AND CHALLENGE WITH CONFIDENCE

### QUICK DETAILS

#### Product Material

LINER: PTFE (RUBBER, F46, PFA FOR OPTION)  
MOC: CARBON STEEL (STAINLESS STEEL FOR OPTION)  
ELECTRODE: 316L (HB, HC, TI, TA FOR OPTION)

#### Product Color

COLOR: NAVY / CUSTOMIZED

#### Other Details

Medium: Liquids larger than 5  $\mu$ s/cm  
Power: 220VAC / 24VDC  
Signal O/P: Pulse and current 4~20 mA  
Comm.: RS485  
Protection: IP65  
SIZE: DN15-DN3000(1/2-120 INCHES)  
STRUCTURE: INTEGRAL / SLIPT



#### PRODUCT DETAILS

DETAILS REFLECT QUALITY



### CONVERTOR

01



1. LCD display Cumulative flow, Instantaneous flow, Forward flow, Reverse flow, etc.
2. Units: L/h, L/m, L/s, m<sup>3</sup>/h, m<sup>3</sup>/m, m<sup>3</sup>/s, etc.
3. Language: English.

### SENSOR

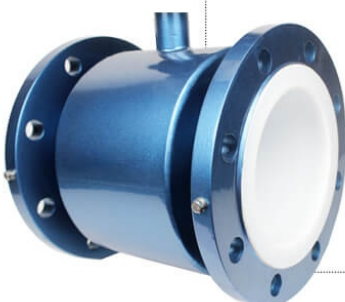
02

1. Four pieces of electrode to keeps a good working performance.
2. Multiple medium measurements.
3. It can resist acid, alkali, salt corrosion.
4. Lining: polychloroprene rubber, urethane rubber, PTFE, F46, PFA, etc.



### FLANGES

03



1. Good quality flanges to connect the sensor with the pipe tightly.
2. We SS304 material to anti-corrosive.
3. We offer various of flange standard, such as DIN, JIS, ANSI, ASME, BS, etc.
4. Very shiney surface by polishing workmanship.

### CIRCUIT BOARD & COVER

1. Circuit board undergoes aging test and vibration test.
2. Surge protection device.
3. EXplosion-proof cover to ensure safty.

