



High precise electromagnetic remote type acid flow meter flange type flowmeter

Max-Flow

Max-Flow

SPLIT / REMOTE MAG FLOW METER

INNOVATION AND CHALLENGE WITH CONFIDENCE

QUICK DETAILS

Product Material

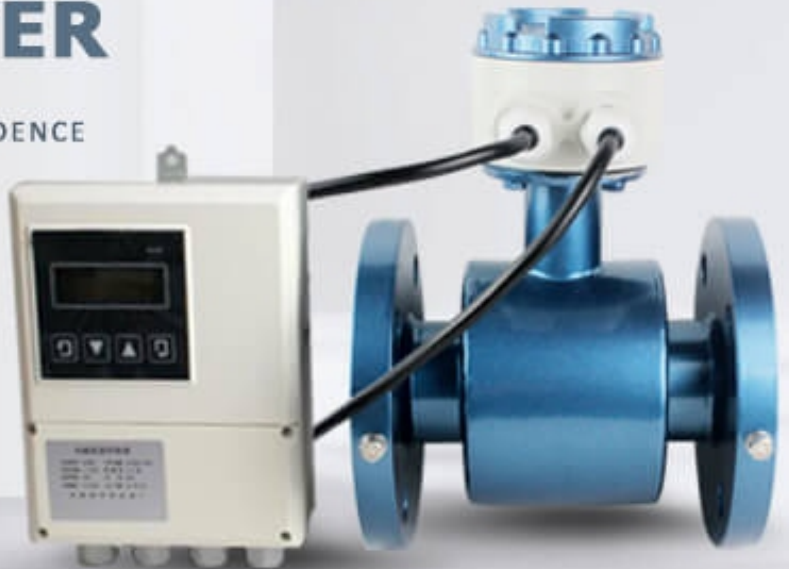
LINER: PTFE (RUBBER, F46, PFA FOR OPTION)
MOC: CARBON STEEL (STAINLESS STEEL FOR OPTION)
ELECTRODE: 316L (HB, HC, TI, TA FOR OPTION)

Product Color

COLOR: NAVY / CUSTOMIZED

Other Details

Medium: Liquids larger than 5 μ s/cm
Power: 220VAC / 24VDC
Signal O/P: Pulse and current 4~20 mA
Comm.: RS485
Protection: IP68
SIZE: DN15-DN3000(1/2-120 INCHES)
STRUCTURE: SPLIT / REMOTE



PRODUCT DETAILS

DETAILS REFLECT QUALITY



CONVERTOR

01



1. LCD display Cumulative flow, Instantaneous flow, Forward flow, Reverse flow, etc.
2. Units: L/h, L/m, L/s, m³/h, m³/m, m³/s, etc.
3. Language: English.

SENSOR

02



1. Four pieces of electrode to keep a good working performance.
2. Multiple medium measurements.
3. It can resist acid, alkali, salt corrosion.
4. Lining: polychloroprene rubber, urethane rubber, PTFE, F46, PFA, etc.

FLANGES

03



1. Good quality flanges to connect the sensor with the pipe tightly.
2. We offer various of flange standard, such as DIN, JIS, ANSI, ASME, BS, etc.
3. Very shiny surface by polishing workmanship.

CIRCUIT BOARD & COVER

1. Circuit board undergoes aging test and vibration test.
2. Surge protection device.

